



BOEDEKER PLASTICS, INC.

Solutions for the Compressor, Pump & Valve Industry
Engineering Plastic Shapes & Precision Machined Parts

Increase Mean Time Between Repair



800.444.3485 | WWW.BOEDEKER.COM



BOEDEKER PLASTICS, INC.

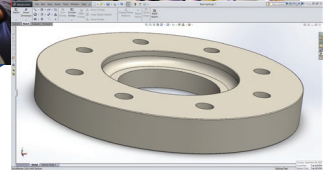


Engineering Plastics & Composite Sheet, Rod & Tube

- American Owned & Operated
- 500+ Years Combined Plastics Experience
- High Pressure High Temperature Materials
- Hard to Find Materials & Sizes
- 10 Million Dollar Inventory
- Same Day Shipments & Cut to Size Service
- Entire Inventory is Coded for Full Traceability
- MFG. Certs. and C of C's Available Upon Request



Precision Machining & Technical Services



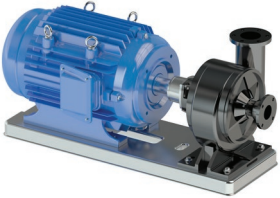
- 76 CNC Machines
- Prototype to Production Quantities
- Part Design Assistance
- Customer Inventory Programs | JIT Supply
- Specializing in Plastic & Composite Only Machining
- ISO 9001 & 13485 Certified
- Material Selection Services by Application
- Metrology (CMMs, Vision Systems, and more)



Contact us, we stand ready to assist | 800.444.3485 | RFQ@BOEDEKER.COM

Serving the Compressor, Pump & Valve Industry Since 1984

Converting to plastics and composites from traditional materials like aluminum, metal & bronze offers enhanced chemical resistance, lower weight, lower friction and improved wear resistance. In many cases this results in improved efficiency and increased MTBR (mean time between repair). We stand ready to assist every step of the way from material selection, material supply, part design, prototype and production supply.

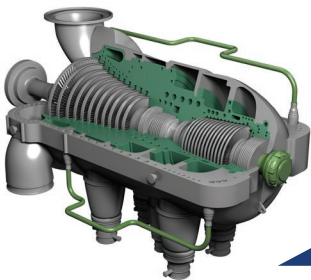
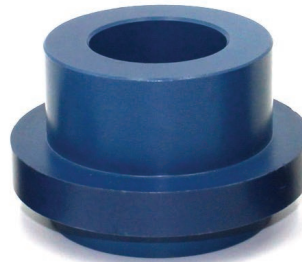


Pump & Valve Applications

- Thrust Bearings & Washers
- Stem Adaptor & Primary Seals
- Case Wear Rings

- Valve Seats
- Impellers
- Line Shaft & Throat Bushings

- Shaft Seals
- Lantern Rings
- Vanes & More



Compressor Applications | Rotating & Reciprocating

- Rub Tolerant Labyrinth Seals
- Impeller Hub Seals
- Rider Rings

- Abradable Seals
- Balance Piston Seals
- Compressor Valve Plates

- Impeller Eye Seals
- Piston Rings
- Poppets & More





BOEDEKER PLASTICS, INC.

Invested in our personnel, facility, inventory, software and equipment to serve our customers with the highest levels of service and quality.

Headquartered in South Central TX with 100K+ square feet on a 21 acre campus



JIT PART INVENTORY SYSTEM



Some of the materials we stock and machine

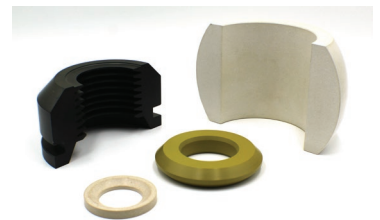
Quadrant EPP Materials

Acetron GP® Grades
 Duratron® CU60 PBI
 Duratron® D7000 PI (Polyimide)
 Duratron® D7015G PI
 Duratron® T PAI (Polyamide-Imide)
 Duratron® T4203 PAI (Electrical Grade)
 Duratron® T4301 PAI (Bearing Grade)
 Duratron® T4501 PAI (Bearing Grade)
 Duratron® T4503 PAI (Electrical Grade)
 Duratron® T5030 PAI (30% Glass)
 Duratron® T5530 PAI (30% Glass)
 Duratron® T7130 PAI (30% Carbon)
 Duratron® T7530 PAI (Carbon Filled)
 Duratron® U1000 PEI (Polyetherimide)
 Duratron® U2300 PEI (30% Glass)
 Ertalylte® PET-P (Polyethylene Teraphalate)
 Ertalylte® TX PET-P (Bearing Grade)
 Fluorosint® 135 PTFE
 Fluorosint® 207 PTFE
 Fluorosint® 500 PTFE
 Fluorosint® HPV PTFE
 Fluorosint® MT-01 PTFE
 Ketron® 1000 PEEK
 Ketron® GF 30 PEEK (Glass Reinforced)
 Ketron® CA30 PEEK (Carbon Reinforced)
 Ketron® HPV PEEK (Bearing Grade)
 Nylatron GS® Extruded Moly Filled Nylon
 Nylatron GSM® Cast Moly Filled Nylon
 Nylatron MC901® Heat Stabilized Cast Nylon
 Nylatron MC907® Cast Nylon
 Nylatron NSM® Cast Solid Lubricant Filled Nylon
 Techtron® PPS Grades
 Techtron® HPV (bearing grade PPS)
 TIVAR® UHMW-PE Grades

Additional Materials

ABS (Acrylonitrile Butadiene Styrene)
 Acetal Homopolymer (Polyoxymethylene)
 Acetal Copolymer
 Celazole® PBI (Polybenzimidazole)
 Celazole T-Series® PBI-PEEK Blends
 Ceramic, Machinable
 CIP Composites™
 CPVC (Chlorinated Polyvinyl Chloride)
 Delrin® (Acetal Homopolymer) Grades
 Delrin® AF
 ECTFE (Ethylene-Chlorotrifluoroethylene)
 FEP (Fluorinated Ethylene Propylene)
 G-3 Glass-Phenolic Laminate
 G-5 Glass-Melamine Laminate
 G-7 Glass-Silicon Laminate
 G-9 Glass-Melamine Laminate
 G-10 Epoxy-Glass Laminate
 G-11 Epoxy-Glass Laminate
 G-30 Polyimide Laminate
 HDPE (High Density Polyethylene)
 Halar® ECTFE (Ethylene-Chlorotrifluoroethylene)
 Kynar® PVDF (Polyvinylidene Fluoride)
 LDPE (Low Density Polyethylene)
 Macor® MGC (Machinable Glass Ceramic)
 Makrolon® PC (Polycarbonate)
 Nylon Type 6 (Cast) Grades
 Nylon Type 6/6 (Extruded) Grades
 PAEK (Polyaryletherketone)
 PAI (Polyamide Imide)
 PAS (Polyarylsulfone)
 PBI (Polybenzimidazole)
 PEEK Grades
 PEEK HT (Hi Temp)
 PEI (Polyetherimide)
 PES CN (Conductive Polyethersulfone)

PETG
 PET-Polyester Film
 PFA (Perfluoroalkoxy)
 PI (Polyimide)
 PPO (Modified Polyphenylene Oxide)
 PPS (Polyphenylene Sulfide) Filled & Unfilled Grades
 PPSU (Polyphenylsulfone)
 PS (Polystyrene)
 PTFE (Polytetrafluoroethylene) Unfilled
 PTFE Bronze Filled
 PTFE Carbon Filled
 PTFE Graphite Filled
 PTFE Moly Filled
 PVDF (Polyvinylidene Fluoride)
 Phenolic C,CE (Laminates)
 Phenolic L,LE (Laminates)
 Phenolic X,XX,XXX (Laminates)
 Polyethylene (HDPE)
 Polyethylene (LDPE)
 Polyethylene (Pipe Grade)
 Polyethylene (UHMW)
 Polyketone
 Polyphenylene Sulfide (Unfilled)
 Polyphenylene Sulfide (Filled)
 Polyphenylsulfone
 Polypropylene
 Teflon® DuPont™ PTFE
 Tefzel® (ETFE)
 Torlon® PAI Grades
 TF-60V PEEK-PBI (Glass-filled)
 TL-60 PEEK-PBI (Lubricant-filled)
 TU-60 PEEK-PBI (Unfilled)
 Udel® Polysulfone
 UHMW (Polyethylene)
 Ultem®
 Urethane



**Cut to Size
 Same Day Shipping!**

PRECISION CUTTING +/- .005"



CONTACT / VISIT US [in](#) [f](#) [t](#) [YouTube](#)

904 WEST 6TH STREET, SHINER, TX 77984 | 800.444.3485 | WWW.BOEDEKER.COM | RFQ@BOEDEKER.COM